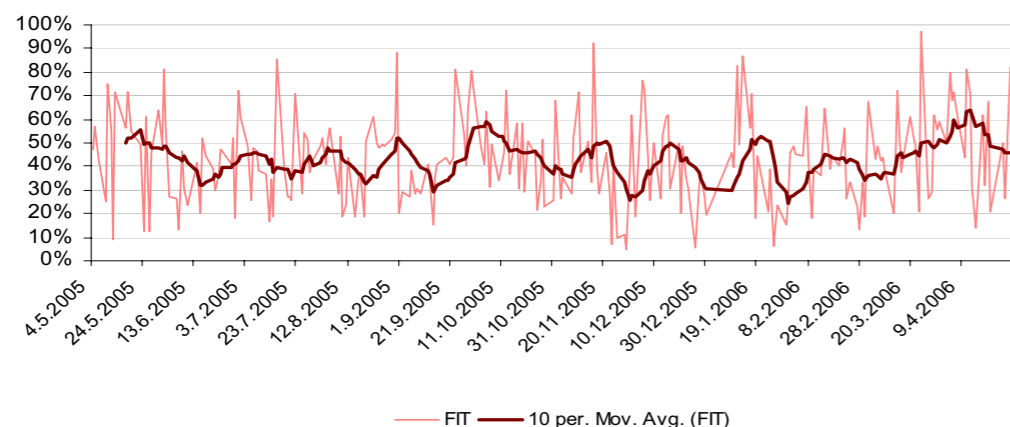
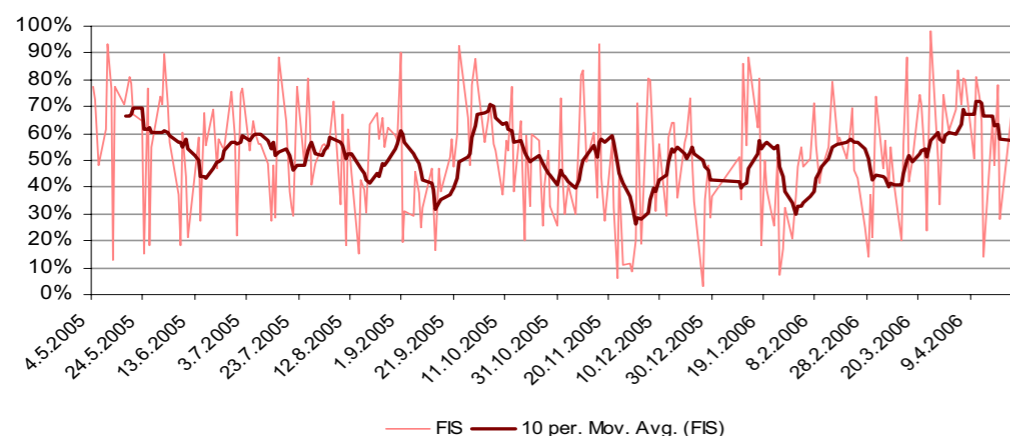


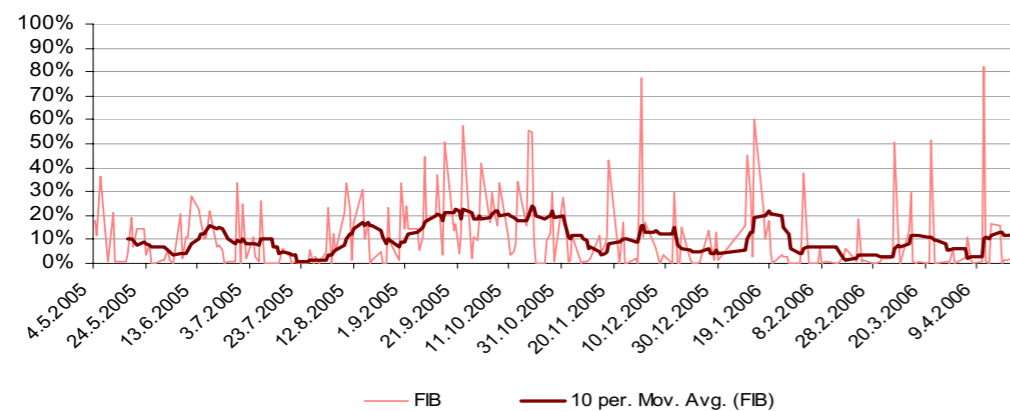
FIT
1.5.2005. - 30.4.2006.



FIS
1.5.2005. - 30.4.2006.



FIB
1.5.2005. - 30.4.2006.



PROŠĆNO DNEVNO UČEŠĆE STRANIH INVESTITORA U TRGOVANJU NA MESEČNOM NIVOU

Indicators of Foreign Investors Participation in BSE Turnover

mesec	FIB	FIS	FIT
May-05	10.69%	66.76%	51.90%
Jun-05	10.94%	60.51%	48.42%
Jul-05	2.82%	59.54%	48.10%
Aug-05	12.51%	53.40%	44.65%
Sep-05	20.09%	48.67%	42.44%
Oct-05	18.69%	49.45%	42.47%
Nov-05	9.99%	42.89%	38.66%
Dec-05	5.99%	48.46%	40.26%
Jan-06	13.34%	44.52%	39.75%
Feb-06	4.72%	51.28%	40.81%
Mar-06	7.68%	53.63%	46.38%
Apr-06	8.70%	63.52%	53.57%

FIT – Foreign Investors Participation in Total Turnover
FIS – Foreign Investors Participation in Total Turnover of Shares

FIB – Foreign Investors Participation in of Bonds

Symbols of shares on Belgrade Stock Exchange have four letters. Additional letters behind symbols of securities signify:

PB – Preference (preferred)share

PC – Preference convertible shares

M – Ordinary shares without voting rights

P – Preference shares with voting rights

TRGOVANJE AKCIJAMA BANAKA Trading with Bank Shares

Emitent	Simbol	Poslednja cena	Promena cene	Obim	Promet	Datum
A banka a.d. Beograd	ABNK	14,000	0.00%			4/28/2006 10:00
A banka a.d. Beograd	ABNKP	14,000	0.00%			4/28/2006 10:00
Agrobanka a.d. Beograd	AGBN	19,000	58.33%	33,646	505,486,873	4/28/2006 09:30
Agrobanka a.d. Beograd	AGBNPB	12,000	100.00%	1,572	14,609,695	4/28/2006 10:00
AIK banka a.d. Niš	AIKB	3,711	33.54%	988,223		4/28/2006 09:30
AIK banka a.d. Niš	AIKBPB	2,550	22.60%	100,317	227,636,372	4/28/2006 10:00
AIK banka a.d. Niš	AIKBPC	2,440	57.42%	3,795	7,456,200	4/28/2006 10:00
Atlas banka a.d. Beograd	ATLS	7,600	0.00%			4/28/2006 10:00
Atlas banka a.d. Beograd	ATLSPB	7,600	0.00%			4/28/2006 10:00
Čačanska banka a.d. Čačak	CCNB	35,500	9.23%	5,159	177,127,195	4/28/2006 09:30
Čačanska banka a.d. Čačak	CCNBPB	16,600	1.74%	11	182,600	4/28/2006 10:00
Laiki bank a.d. Beograd	CEBA	1,200	-26.38%	14,668	18,669,956	4/28/2006 09:30
Laiki bank a.d. Beograd	CEBAPB	1,050	-8.46%	23,487	24,443,722	4/28/2006 10:00
Banca intesa a.d. Beograd	DBBG	128,167	0.00%			4/28/2006 10:00
EFG Eurobank a.d. Beograd	EFGE	145,000	0.00%	6	870,000	4/28/2006 10:00
EFG Eurobank a.d. Beograd	EFGEPB	145,000	0.00%			4/28/2006 10:00
Jugobanka - Jugbanka a.d. K. Mitrovica	JBKM	10,872	0.00%			4/28/2006 10:00
Jubmes banka a.d. Beograd	JMBN	228,000	70.15%	1,046	169,944,269	4/28/2006 10:00
Meridian bank a.d. Novi Sad	MERBM	1,300	0.00%			4/28/2006 10:00
Nacionalna štedionica - banka a.d. Beograd	NASB	700,000	290.63%	21	14,172,880	4/28/2006 10:00
Nova banka a.d. Beograd	NVABM	18,015	0.00%			4/28/2006 10:00
Nova banka a.d. Beograd	NVABPB	19,800	96.55%	1	19,800	4/28/2006 10:00
Panonska banka a.d. Novi Sad	PABA	12,800	58.02%	10,878	116,829,949	4/28/2006 09:30
ProCredit Bank a.d. Beograd	PCBN	1,272	0.00%			4/28/2006 10:00
Poštanska štedionica a.d. Beograd	PSBN	29,000	150.41%	6,468	145,435,864	4/28/2006 10:00
Poštanska štedionica a.d. Beograd	PSBNPB	27,000	133.14%	1,545	29,671,800	4/28/2006 10:00
Srpska banka a.d. Beograd	SRBN	30,000	87.50%	1,087	21,565,254	4/28/2006 10:00
Univerzal banka a.d. Beograd	UNBN	14,501	110.77%	43,133	580,498,318	4/28/2006 09:30
Zepter banka a.d. Beograd	ZEPT	10,000	0.00%			4/28/2006 10:00
Zepter banka a.d. Beograd	ZEPTP	15,999	0.00%			4/28/2006 10:00